

Haywood County:

- ◆ Has the highest average elevation of any county in the east.
- ◆ Rivers and springs are its own: All water in Haywood County originates here.
- ◆ Is a Civil War site: Kirk's Raid occurred here in 1865.

Visitor Centers

Balsam Visitor Center & Rest Area
East of the Blue Ridge Parkway entrance on US 23/74
828-452-7307
Town of Canton Visitor Center & Museum
36 Park St., Canton
828-646-3412

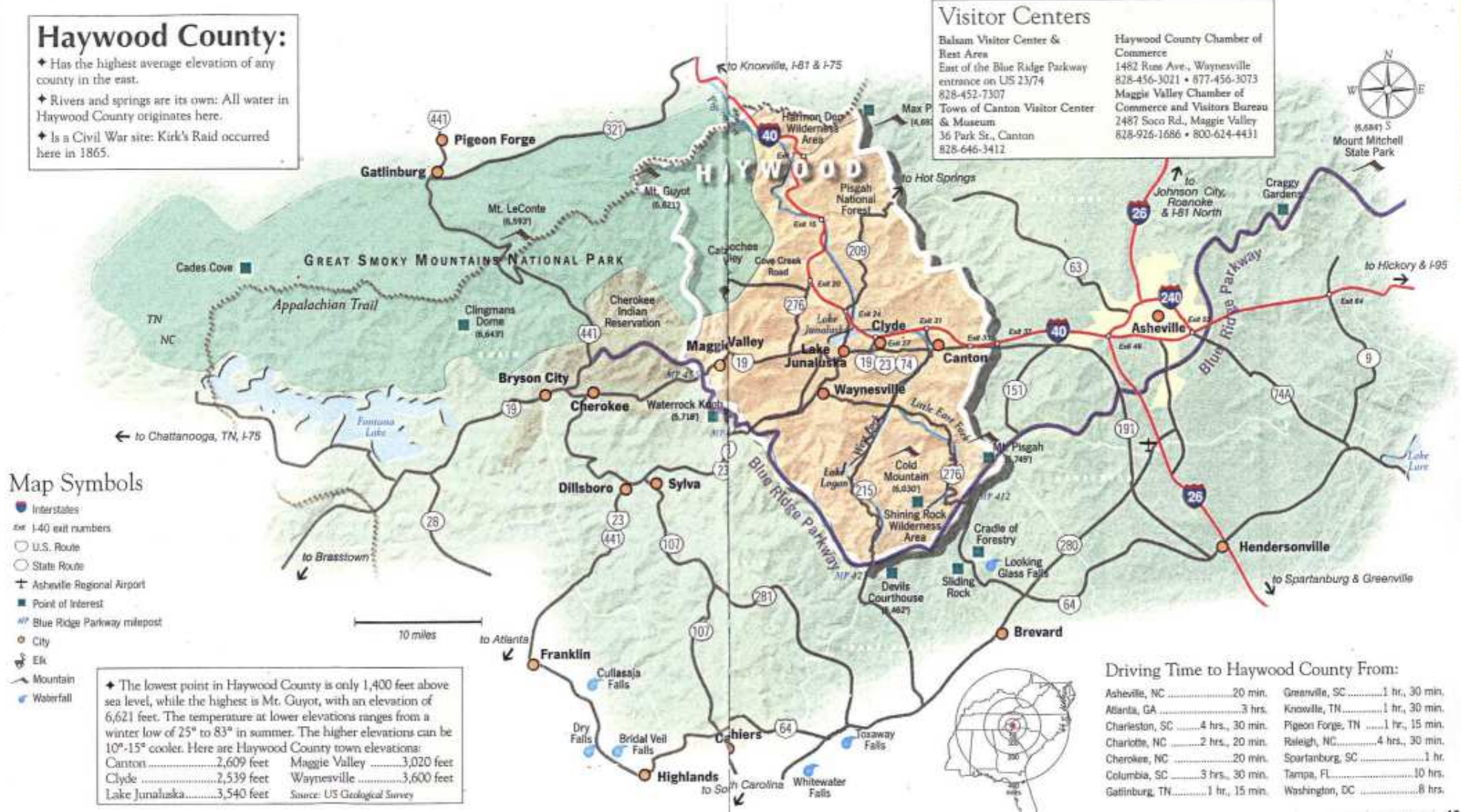
Haywood County Chamber of Commerce
1482 Rees Ave., Waynesville
828-456-3021 • 877-456-3073
Maggie Valley Chamber of Commerce and Visitors Bureau
2487 Soco Rd., Maggie Valley
828-926-1686 • 800-624-4431



Map Symbols

- Interstates
- I-40 exit numbers
- U.S. Route
- State Route
- Asheville Regional Airport
- Point of Interest
- Blue Ridge Parkway milepost
- City
- Elk
- Mountain
- Waterfall

◆ The lowest point in Haywood County is only 1,400 feet above sea level, while the highest is Mt. Guyot, with an elevation of 6,621 feet. The temperature at lower elevations ranges from a winter low of 25° to 83° in summer. The higher elevations can be 10°-15° cooler. Here are Haywood County town elevations:
Canton2,609 feet Maggie Valley3,020 feet
Clyde2,539 feet Waynesville3,600 feet
Lake Junaluska.....3,540 feet Source: US Geological Survey



Driving Time to Haywood County From:

Asheville, NC	20 min.	Greenville, SC	1 hr., 30 min.
Atlanta, GA	3 hrs.	Knoxville, TN	1 hr., 30 min.
Charleston, SC	4 hrs., 30 min.	Pigeon Forge, TN	1 hr., 15 min.
Charlotte, NC	2 hrs., 20 min.	Raleigh, NC	4 hrs., 30 min.
Cherokee, NC	20 min.	Spartanburg, SC	1 hr.
Columbia, SC	3 hrs., 30 min.	Tampa, FL	10 hrs.
Gatlinburg, TN	1 hr., 15 min.	Washington, DC	8 hrs.

DIRECTIONS to MAGGIE MOUNTAIN VACATIONS

- FROM ASHEVILLE:** Take I-40 West to Exit 27. Follow signs for Maggie Valley/Waynesville. Take exit 103 to Hwy. 19. Go through two stoplights. Office is on left approx. 1/10 mile after second stoplight.
- FROM TENNESSEE:** Take I-40 East to Exit 20. Follow exit ramp to the right onto Hwy. 276 South. Go approx. 6 miles to stoplight at end. Turn right. Office is on left approx. 1/10 mile after you turn.
- FROM FRANKLIN, NC:** Take Hwy. 411 Bypass to Dillsboro. Take Hwy. 23N/74E to Waynesville. Take exit 102B toward Maggie Valley/Lake Junaluska. Turn left at 4th light onto Hwy. 19 South. Go through next light. Office is on left approx. 1/10 mile after light.
- FROM CHEROKEE, NC:** Take Hwy. 19 North. You will pass J. Arthur's Restaurant on right. Go approx. 3 miles to office on right.